

# POSEIDON Asistent 1.6.4

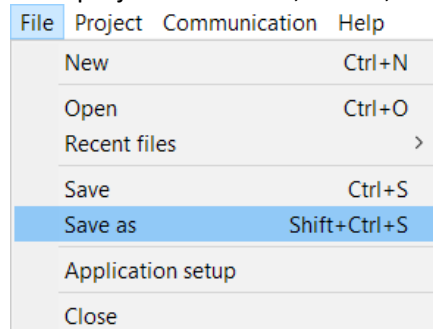
## New features (1.6.3.1 --> 1.6.4.)

### New devices support:

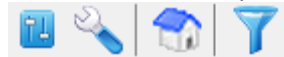
- P8 R 4 DLA N, P8 LR HF DLM, P8 LR HC DLM
- P8 T 1 STYLE, P8 T 2 STYLE, P8 T 4 STYLE
- Versions and variants update for P8 TR IP and P8 GWA DIN
- Added ID ranges for some devices and also fixed compatibility for copying links and settings


### New functions:

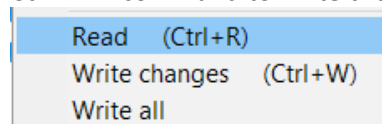
- Keyboard shortcuts support
  - To work with project file Ctrl+N , Ctrl+O, Ctrl+S, Shift+Ctrl+S a Ctrl+L



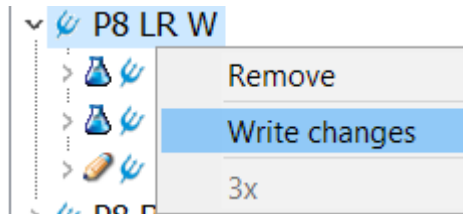
- To work with devices
  - F5, F6, F7, F8 corresponds Status, Settings, Location and Filter



- Space bar = display the status of the selected device
- Ctrl+Space bar = settings of the selected device
- Shift+Space bar = location settings of the selected device
- Ctrl+F = search for a device or channel in the tree 
- Ctrl+R = command to read the data from the selected device
- Ctrl+W = command to write the data into the selected device



- The merged devices of the same type in the left "Info" tree has gottten a context menu with options
  - remove all devices in the branch
  - write device changes in the branch



- The number of devices in the selected branch is also displayed

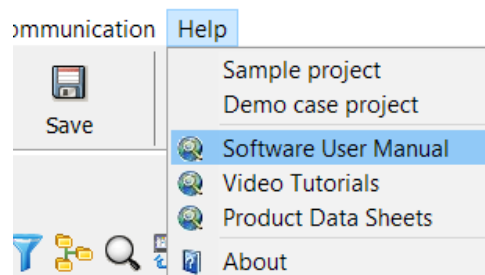
- ABOUT dialog has been redesigned



- The web address is now routed to [www.enikaposeidon.cz/en](http://www.enikaposeidon.cz/en)
- Added a new button **Software update**, which opens a web page in the browser with links to download the current version of the PA

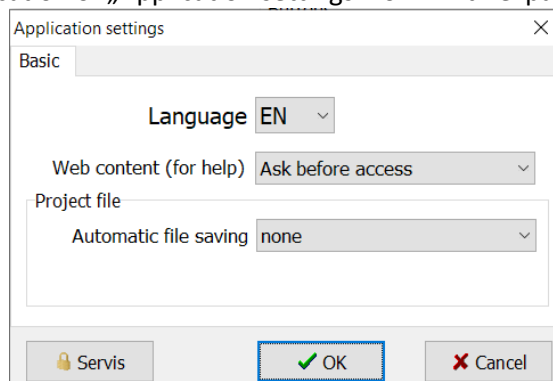
- In the main menu of the application, links to web content were added

- Software User Manual and Video tutorials on the server [www.enikaposeidon.cz/en](http://www.enikaposeidon.cz/en)



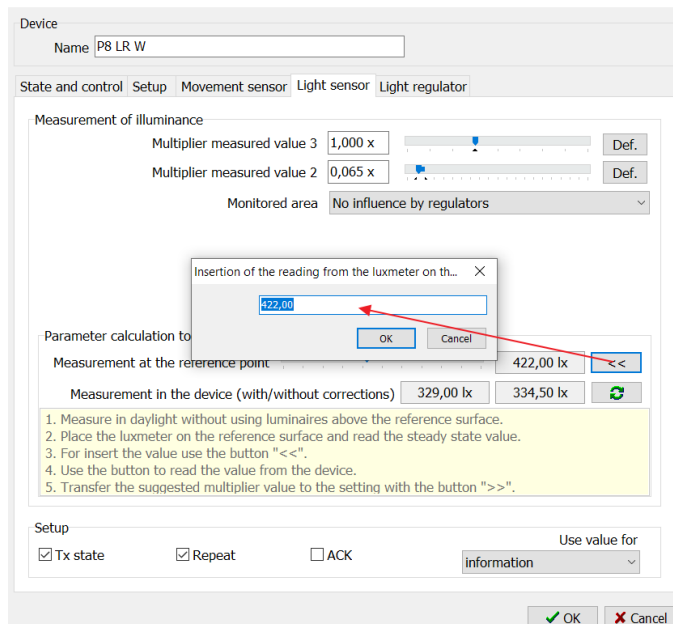
- As the manuals are now available online, PDFs are no longer part of the application installation

- Modification of „Application settings“ form with expanded new setting options



- Added the option of application behavior when trying to display content from the Internet (HELP or ABOUT)
  - You can always allow, ask before access or deny
  - Opening content from the web is provided via the default browser installed in Windows
- Added settings for project file automatic saving





- New DALI luminaire configuration tool for use with devices with the new DALI application controller (P8 Rx DL and P8 LR xx DLM)
  - Use of auxiliary memory between device and automation in device >> acceleration of some activities, including searching and addressing CG
  - Possibility to change the assigned luminaire address
  - Added support for luminaire identification (flashing by defined period and set time)
  - Advanced graphics for overview and access to individual luminaires (drivers)



**ENIKA.CZ s.r.o.**  
 Vlkov 33  
 509 01 Nová Paka  
 Czech Republic

tel. [+420 493 773 311](tel:+420493773311)

[enika@enika.cz](mailto:enika@enika.cz)

<https://www.enikaposeidon.cz/en/>